

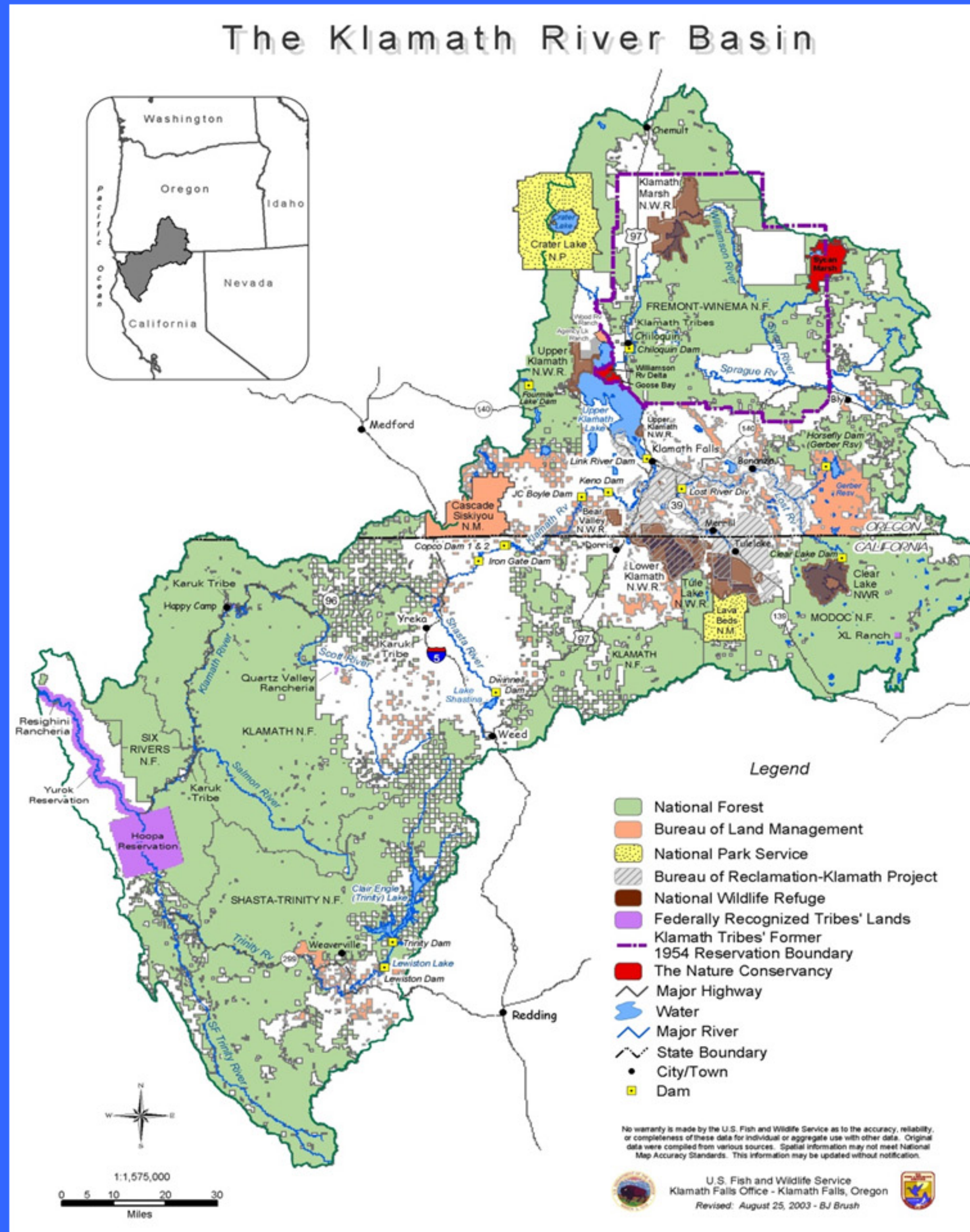
Klamath River Basin Watershed

Scott Valley

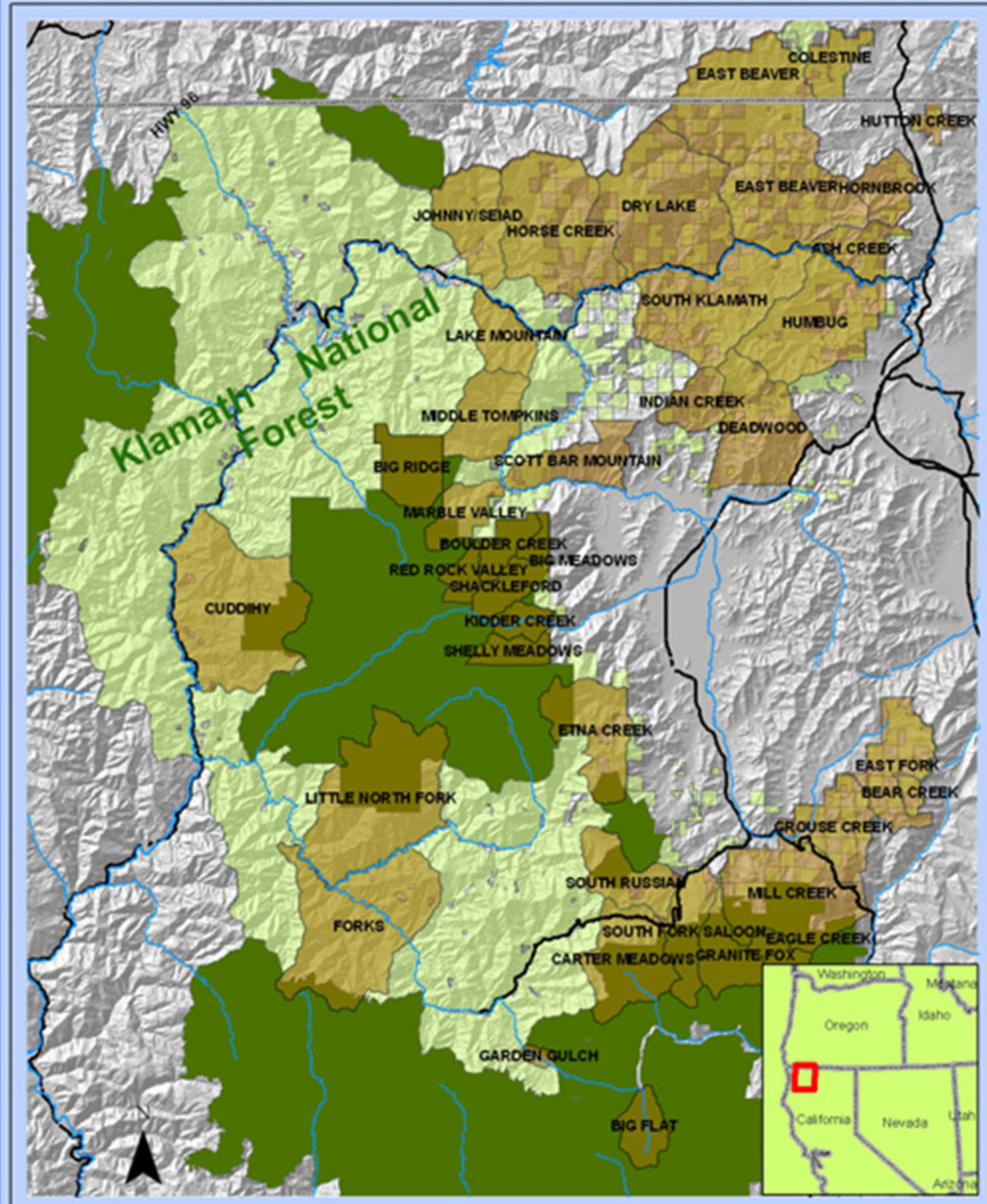
Shasta Valley



Klamath River Basin Property Ownership

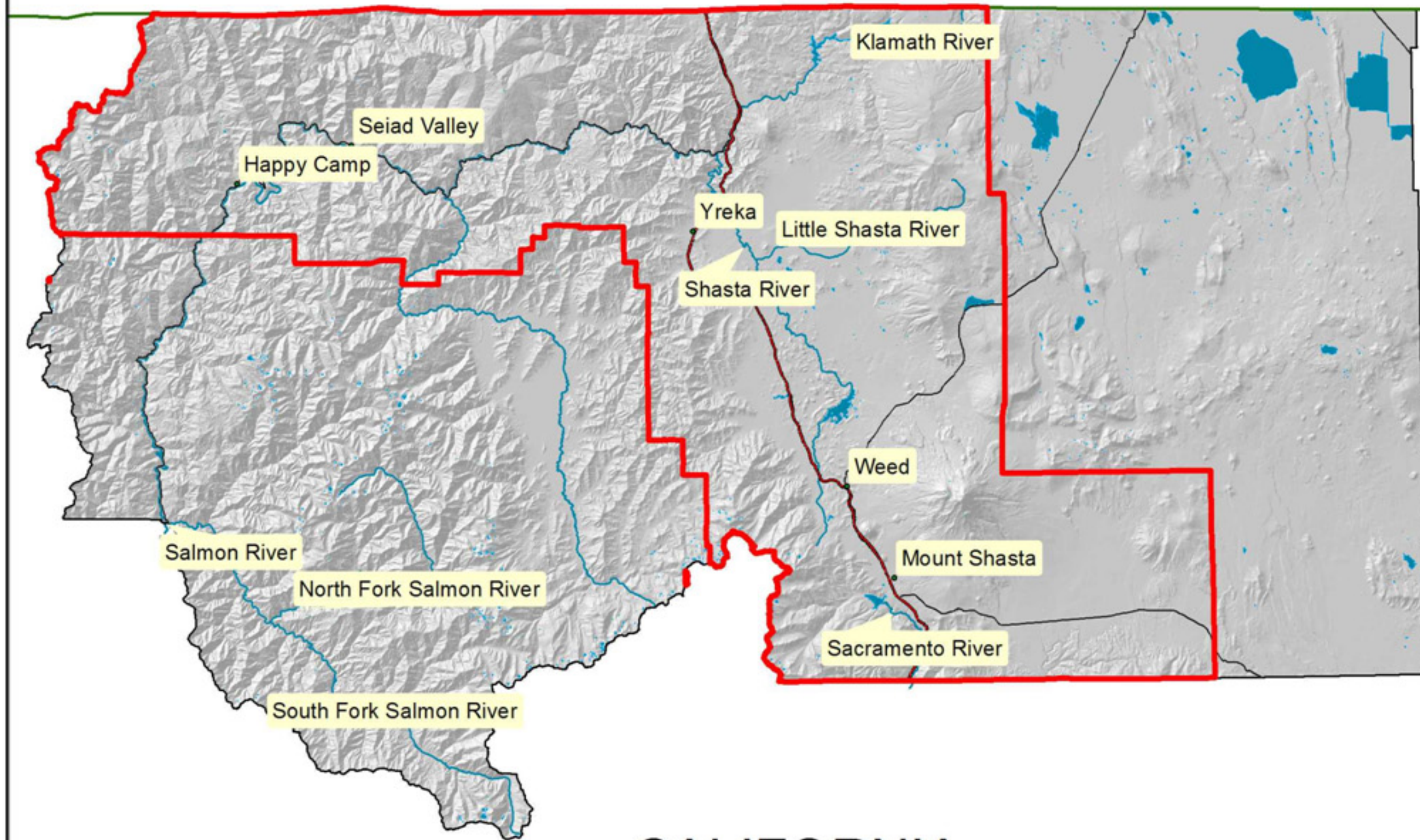


Grazing Allotments in Northern California's Klamath National Forest



Shasta Valley RCD Boundaries

OREGON



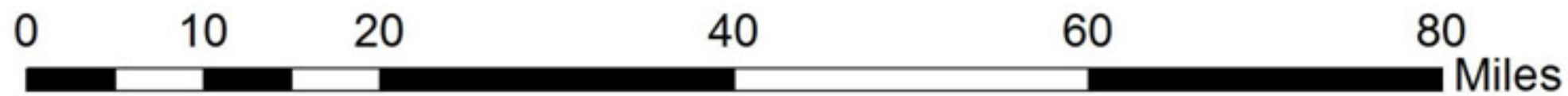
CALIFORNIA



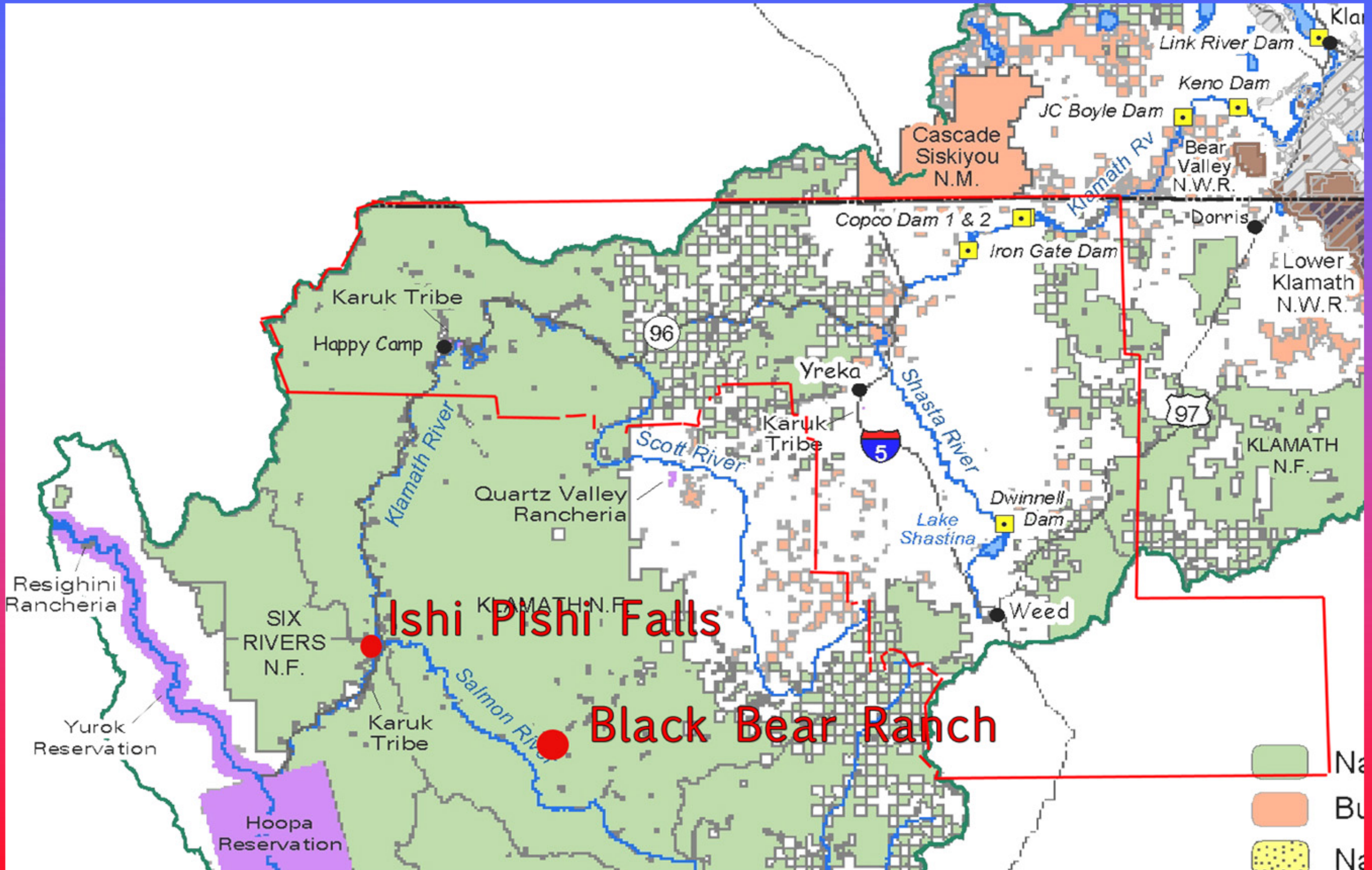
Area of Focus

Siskiyou County

- Towns and Cities
- ▭ Shasta Valley RCD Jurisdiction
- Highway
- Freeway
- ☒ California
- ☒ Siskiyou County
- 🟦 Lake



RCD on Property Ownership



Proposed Siskiyou Crest National Monument

An Ark for Biodiversity



Rugged and geologically complex peaks



Diverse forests, grasslands, meadows, shrubs...



Headwater streams of the Rogue and Klamath Rivers




Vital habitat for carnivores



Botanical hotspots

- Pacific Crest Trail
- Existing Wilderness
- Oregon Caves N.M.
- Cascade Siskiyou N.M.



Map by Joseph Vaile

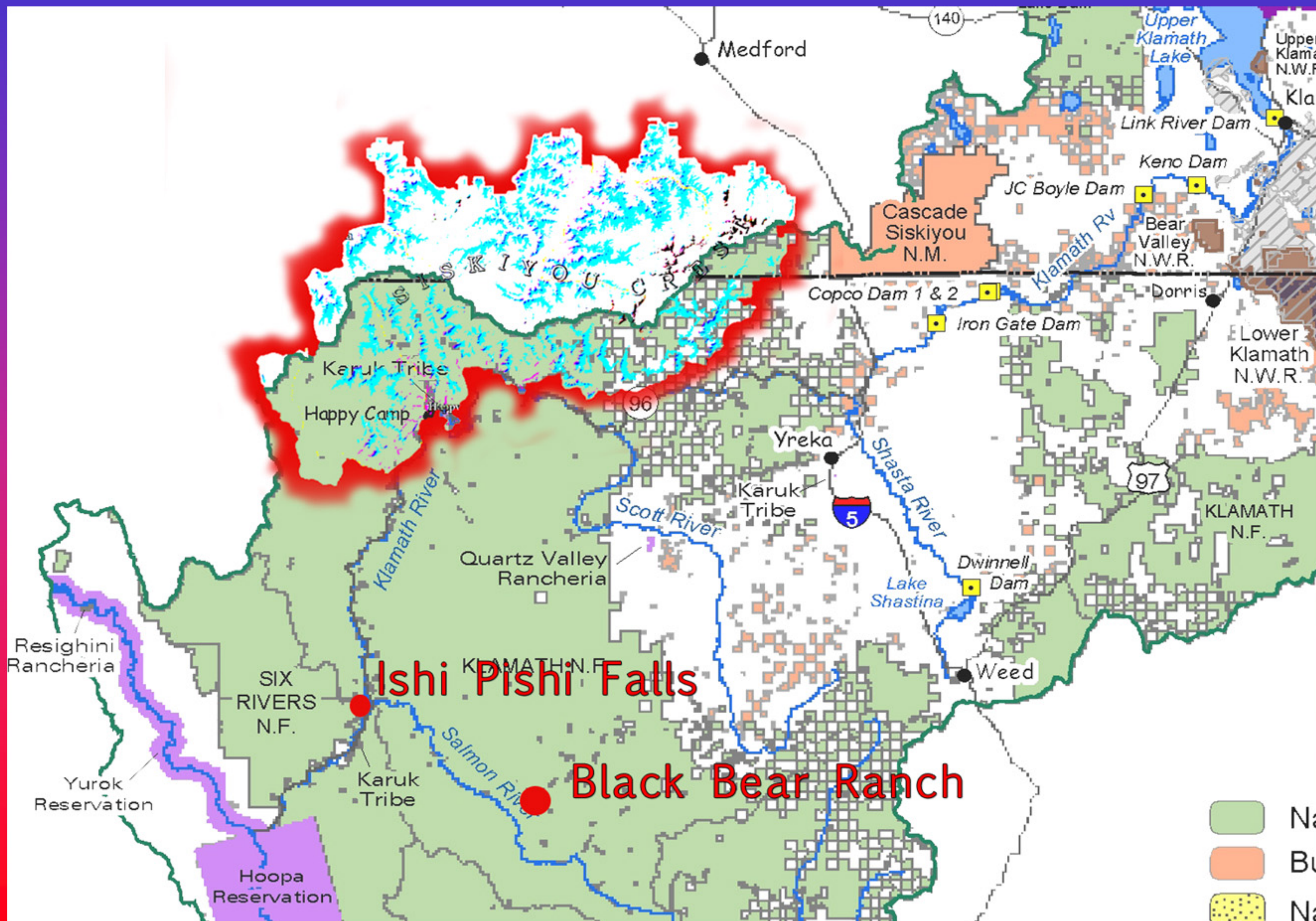
Siskiyou Crest Trek 2009

This August, scientific and conservation leaders convened by KS Wild will embark on a 90-mile hiking expedition to transect the proposed Siskiyou Crest National Monument using multimedia coverage to provide the public with an ecological snapshot of what we discover!

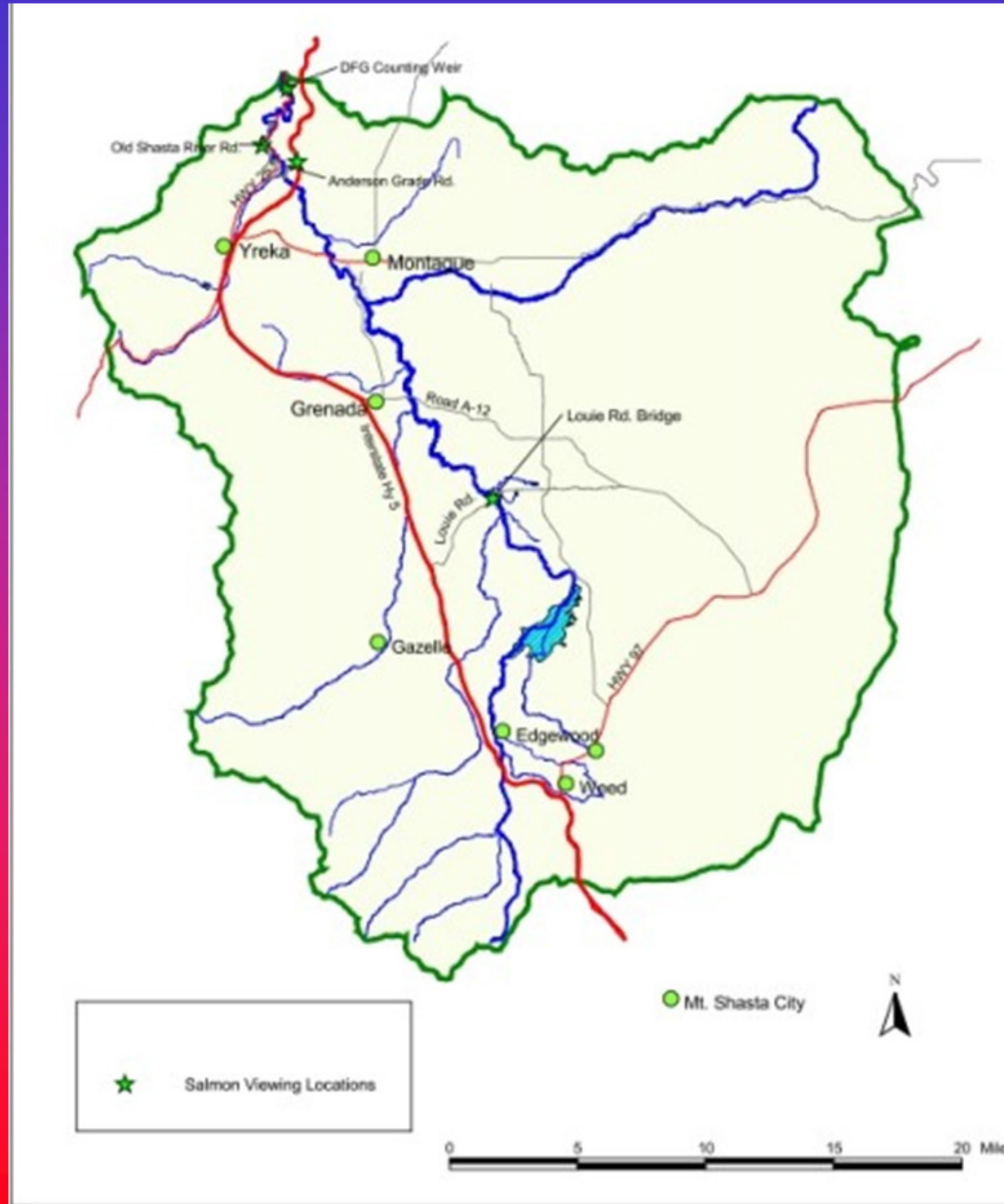
Sponsor a hiker! We are looking for folks who support permanent protection for the Siskiyou Crest to commit \$1/mile (or more or less) to help fund this outreach effort. Please contact laurel@kswild.org to sign up as a sponsor.

Visit www.kswild.org/siskiyoucresttrek for more information and updates.

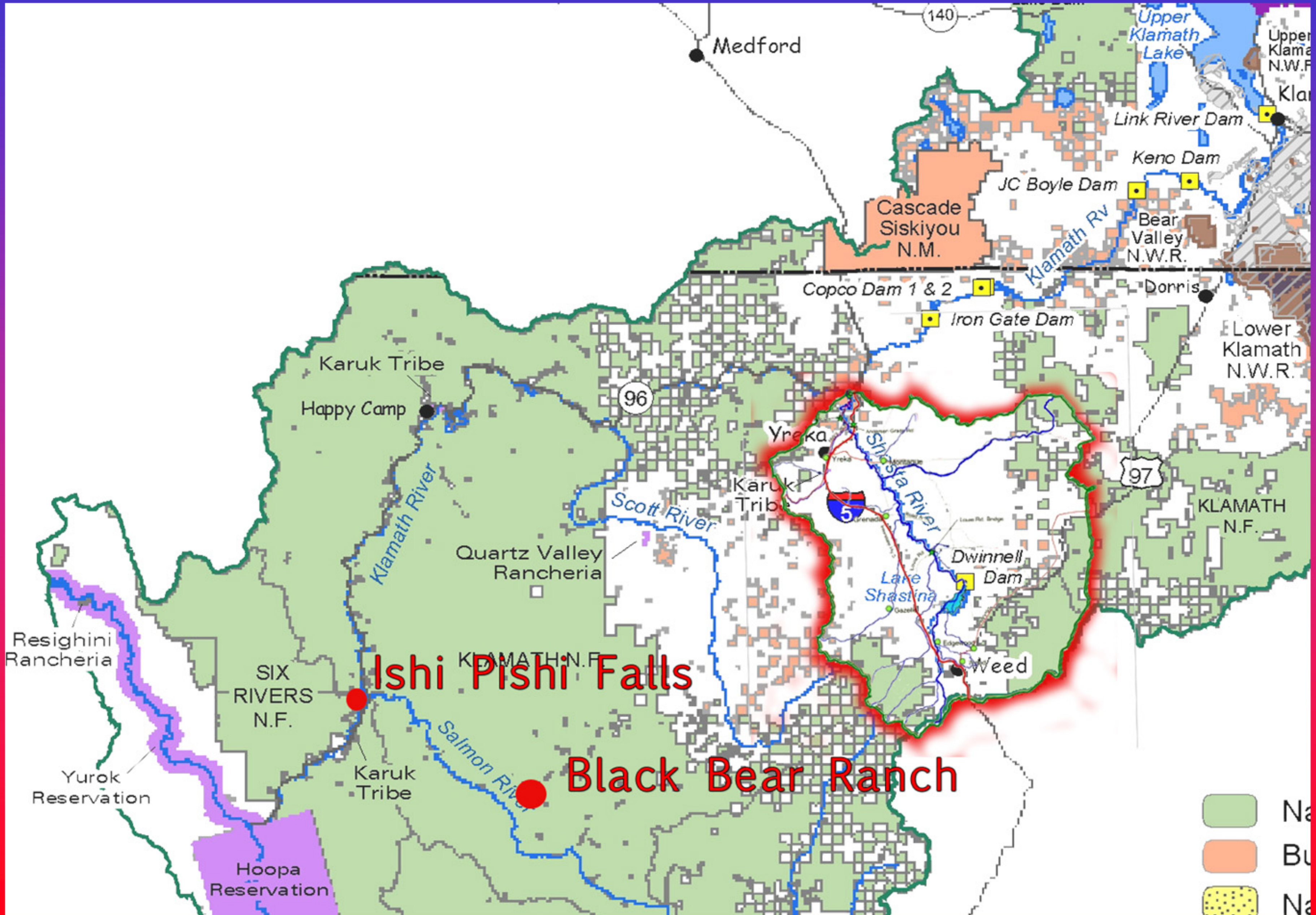
Siskiyou Wilderness on Property Ownership



Salmon Claimed Shasta Habitat



Salmon Habitat on Property Ownership



CALTRANS Wildlands Project Goals

**CALTRANS funding (state and federal)
habitat connectivity project.**

Map from CEHCP -

California Essential Habitat Connectivity Project

Description

The California Department of Transportation and California Department of Fish and Game commissioned the California Essential Habitat Connectivity Project because a functional network of connected wildlands is essential to the continued support of California's diverse natural communities in the face of human development and climate change."

<http://databasin.org/datasets/4f6cd2c4e5b4461e9de63e7f7eb2a67a>

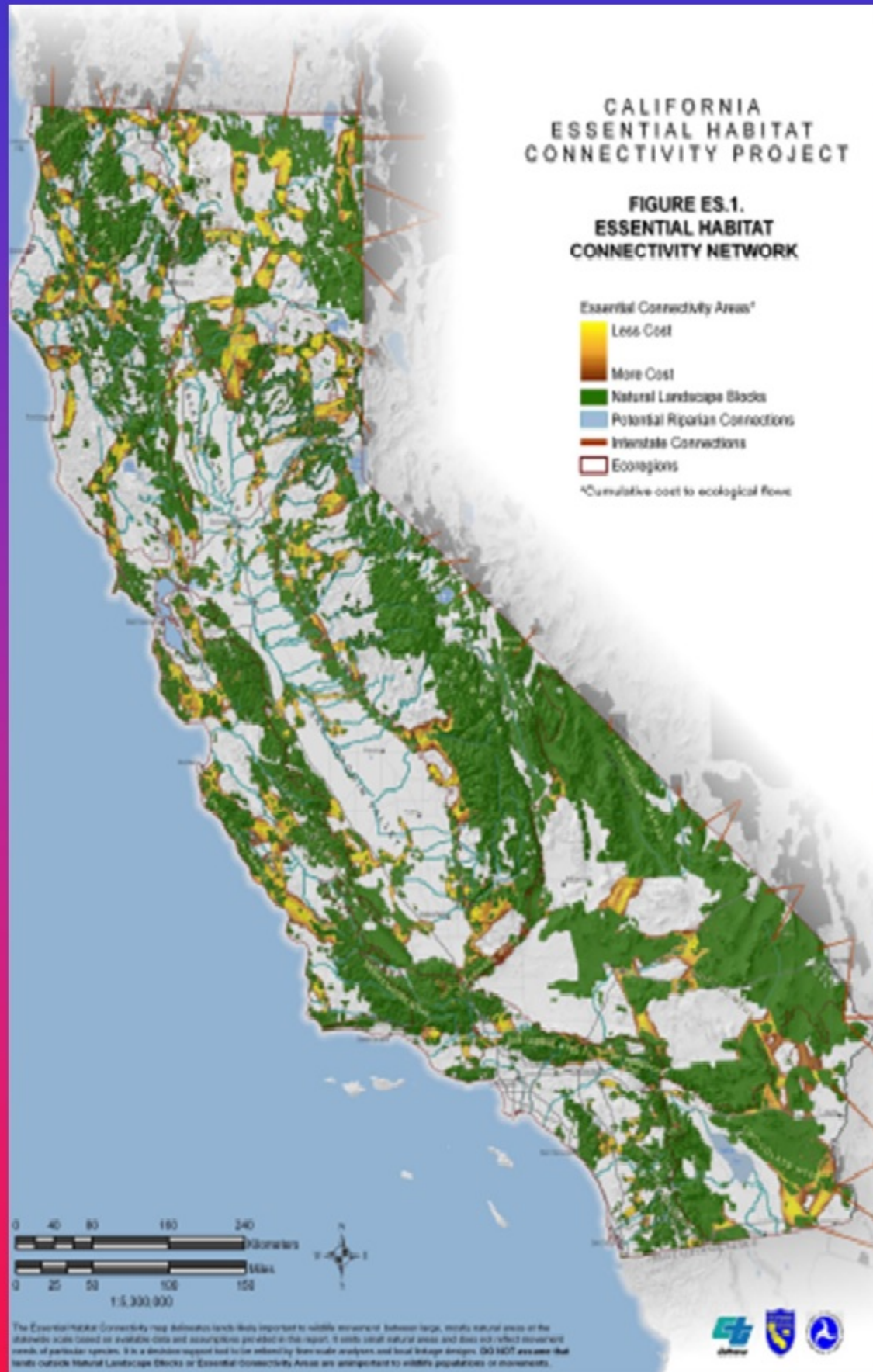
<http://www.dfg.ca.gov/habcon/connectivity/>

<http://www.scwildlands.org/projects/caltrans.aspx>



Areas in yellow to orange/brown are targeted for habitat connectivity.

California Essential Habitat Connectivity Project (EHCP)



Conservation Easements: The Key to the Corridors

- **“At least half of the land area of the 48 coterminous states should be encompassed in core reserves and inner corridor zones within the next few decades.”**
- **“The native ecosystem and the collective needs of non-human species must take precedence over the needs and desires of humans.”**
- **“I would offer a more ambitious long-term goal. . . that at least 95% of a region be managed as wilderness.”**

Dr. Reed Noss EHCP Senior Review Board

Karuk Claimed Property

KARUK ABORIGINAL TERRITORY

Northern California/Southern Oregon
With Klamath River



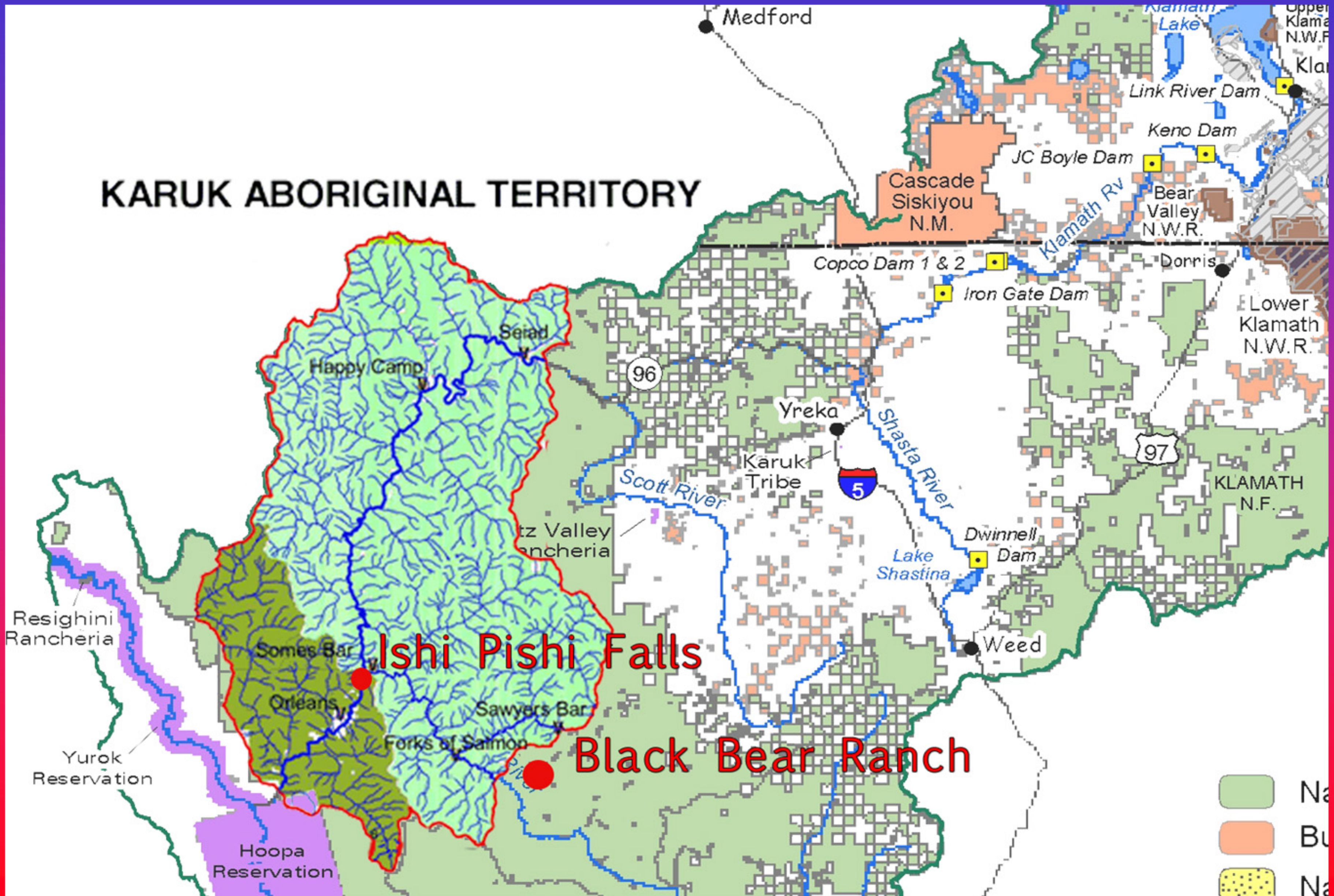
Total Acres - 1,048,818
Square Miles - 1639
Creeks & Rivers - 1919 miles
Roads - 1825 miles



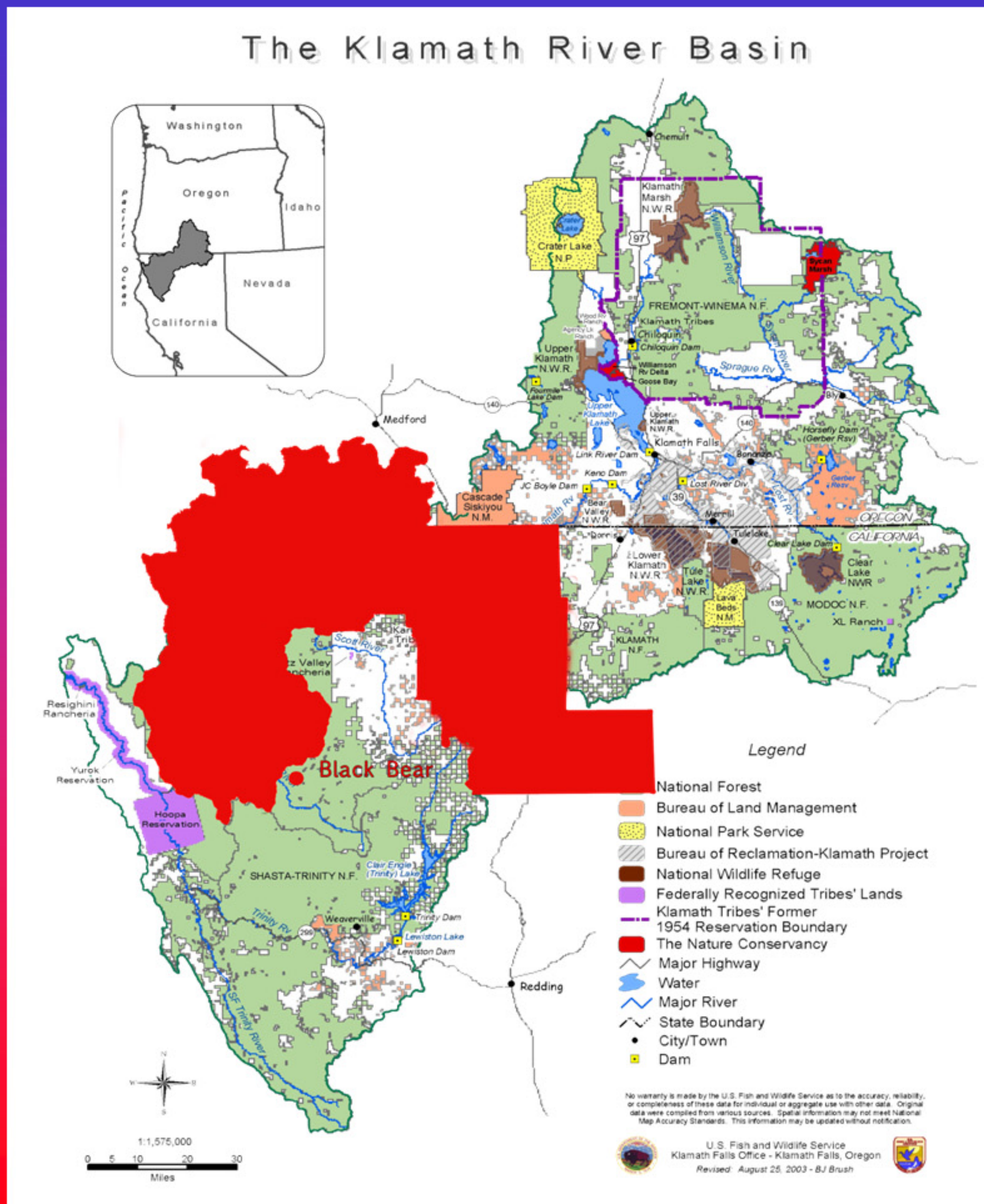
Map Created by Scott Quinn
Karuk Land Manager
UTM Zone 10, NAD 1927
September 17, 2004

**Moved to
Western
Klamath River
Basin appx.
500 A.D., West
of currently
claimed area.**

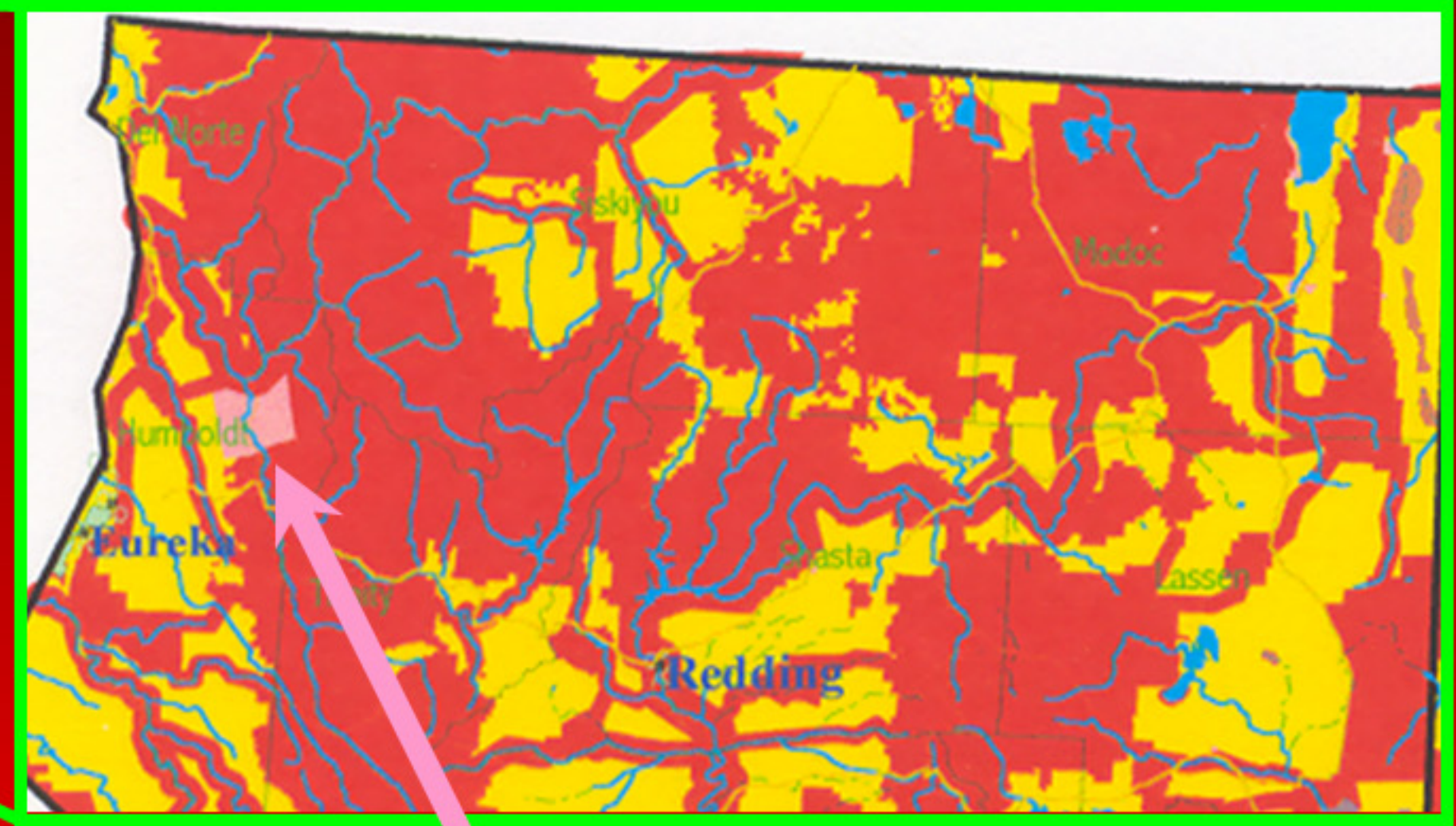
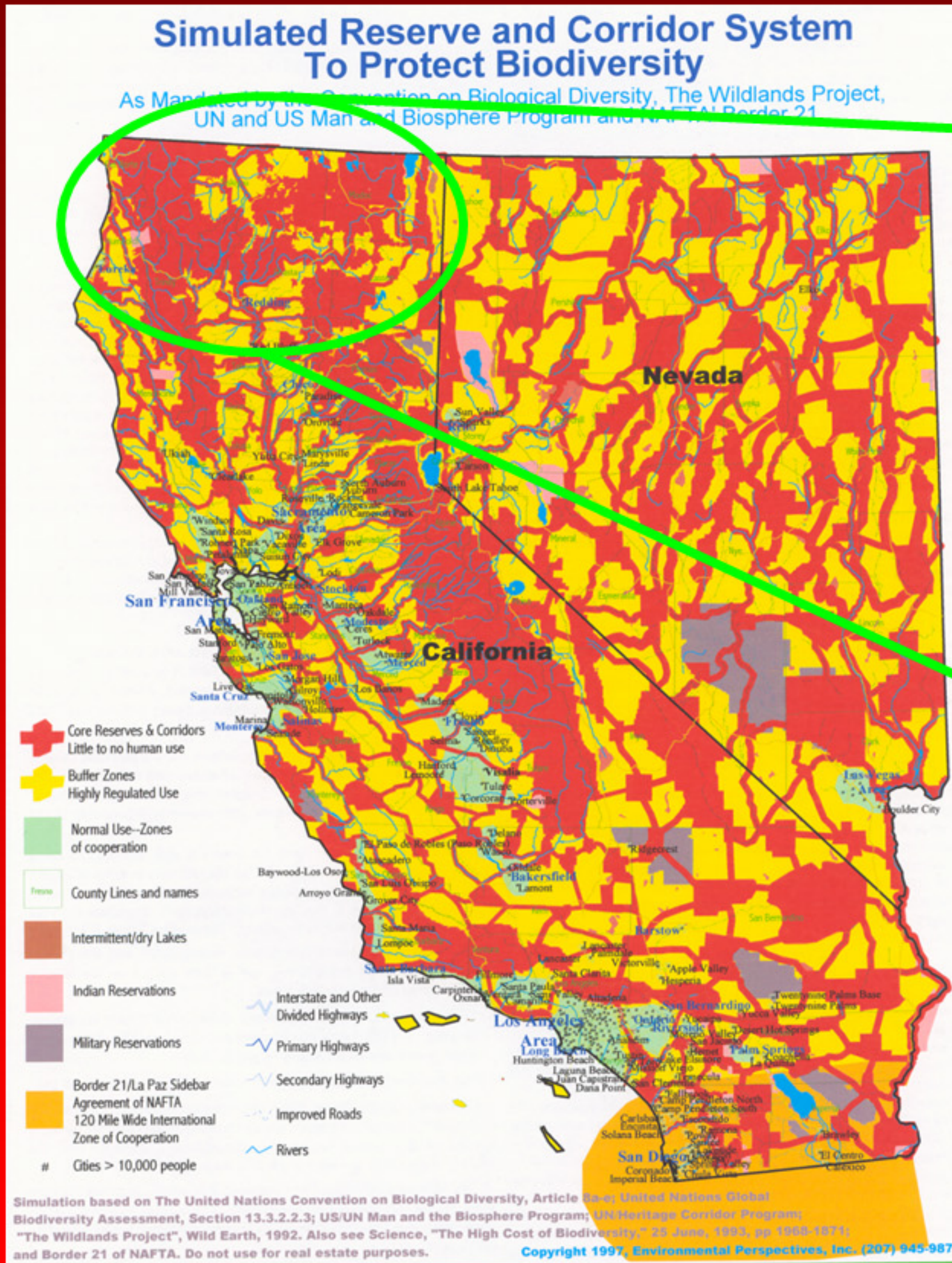
Karuk Claimed Property



Sum of Regulation Maps on Property Ownership



Wildlands Project Goals for California



Pink Area is Hoopa/Yurok Federally Recognized Indian Reservation

RED AREAS INDICATE LITTLE TO NO HUMAN USE!!

Conservation Easements: The Key to the Corridors

- "The only hope of the Earth is to withdraw huge areas as inviolate natural sanctuaries from the depredations of modern industry and technology. Move out the people and cars. Reclaim the roads and the plowed lands."

Dave Foreman Confessions of an
Eco-Warrior